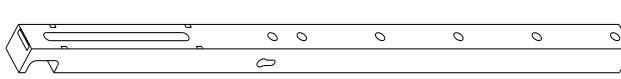

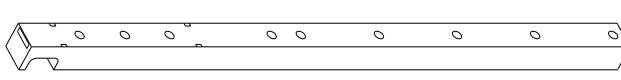
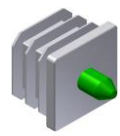
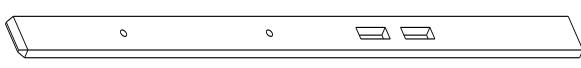





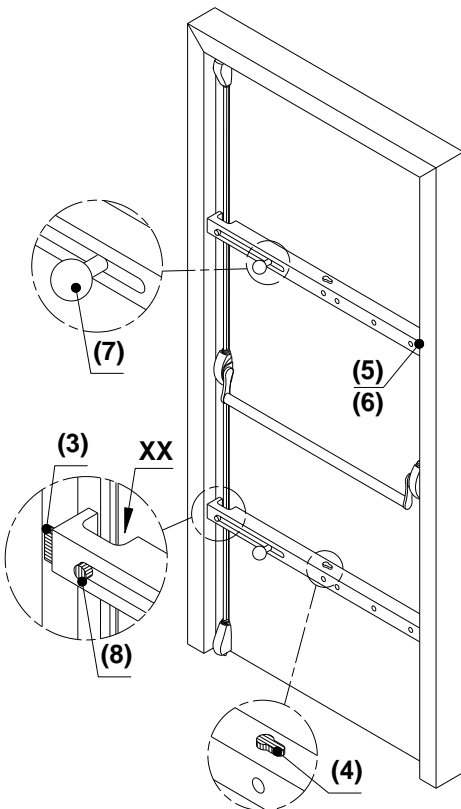




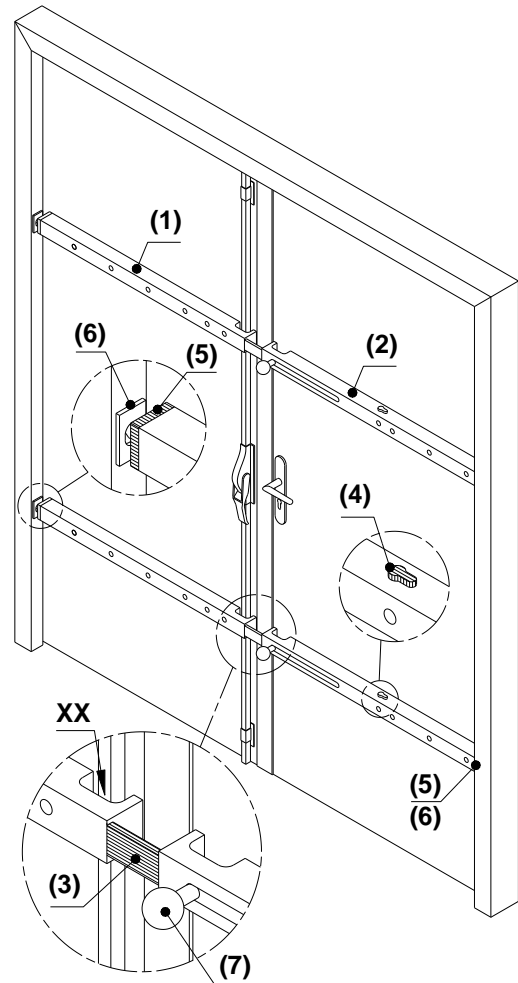
La pose des barres de condamnation est réalisée après la pose de l'antipanique ou de la crémone.

1	Tube 1 vantail ou vantail service 	4	Cylindre européen 30x30 s'ouvrant panneton court spécial PM2 et vis métrique TF M5x20 		
2	Tube vantail semi-fixe 	5	Embout avec antigond 		
3	Fer plat mobile 	6	Gâche 	7	Poignée à boule 
8	Vis métrique TR M10x16 	9	Vis autoperceuse TB 4.2x16 	10	Vis autoperceuse TB 4.2x32 

Principe 1 vantail



Principe 2 vantaux



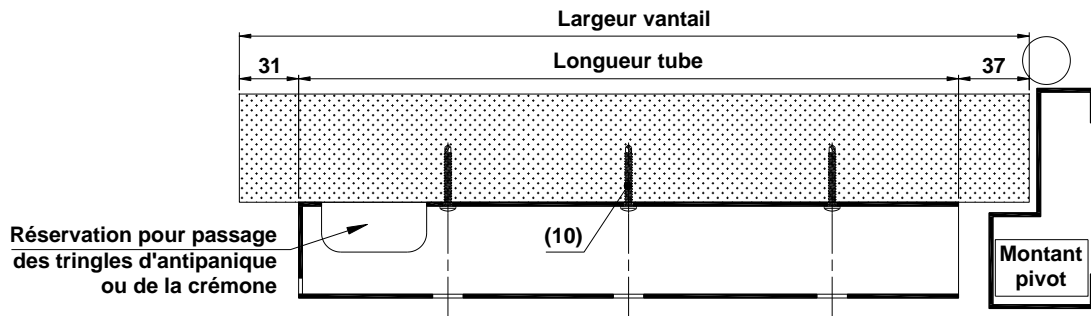
XX : Réserve dans les barres prévue pour le passage des tringles d'antipanique ou de la crémone.

1-Recouper les tubes.

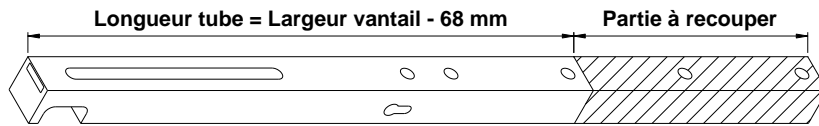
2-Fixer les tubes.



Les trous prépercés sur le vantail correspondent à la position de l'appareil à installer.

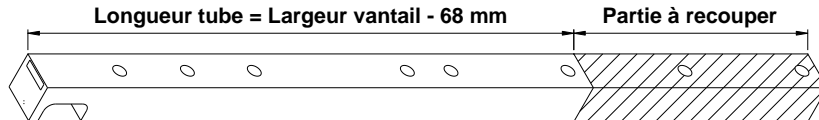


1 vantail
ou
vantail service

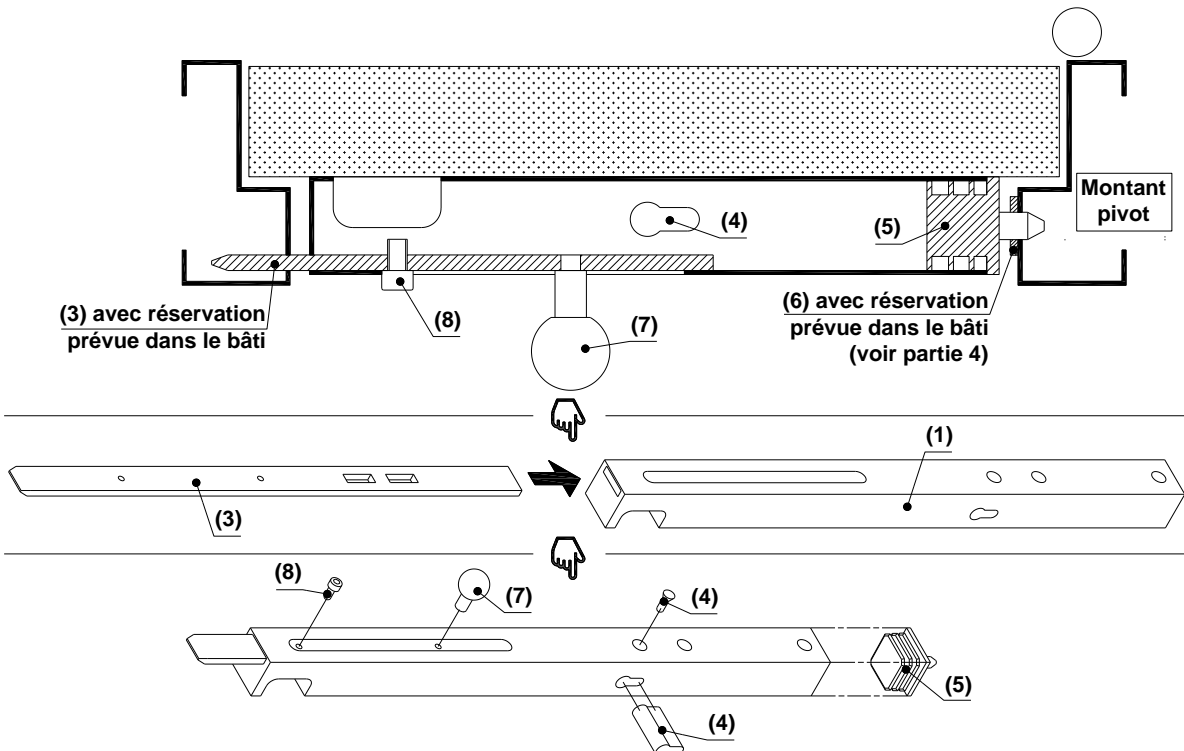


OU

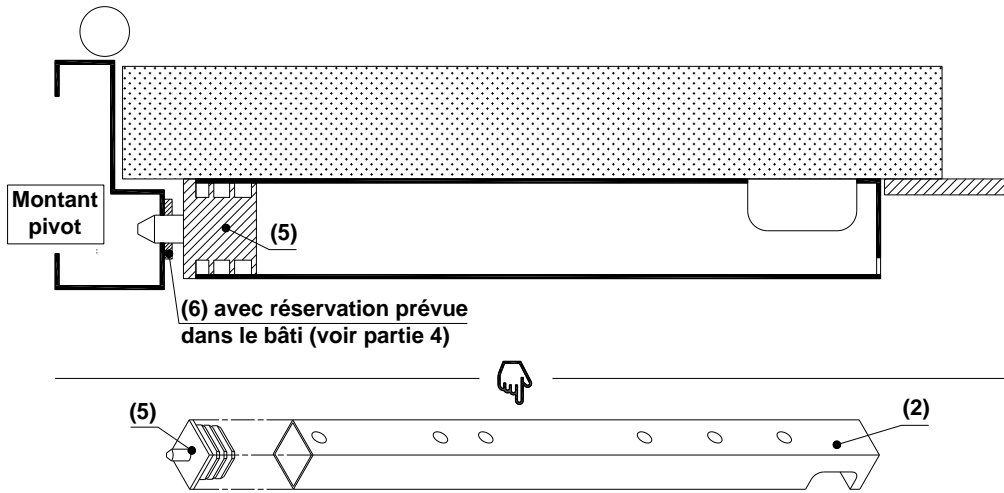
vantail semi-fixe



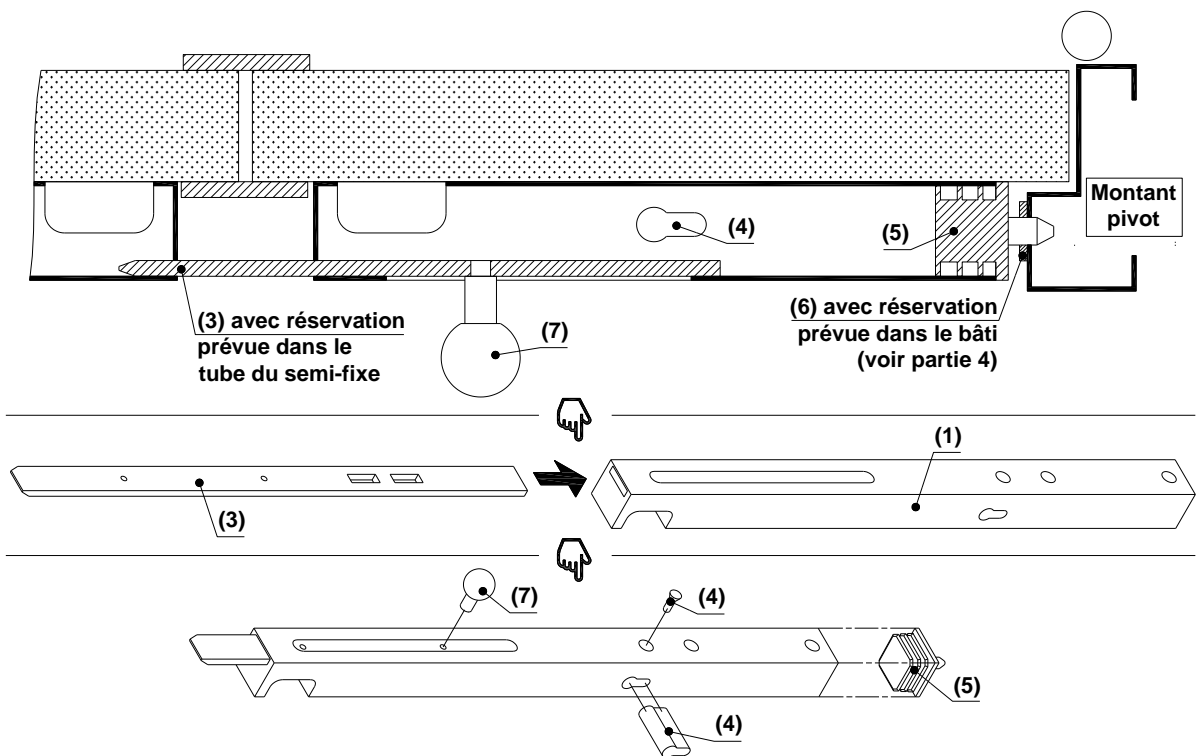
3-1-Montage des accessoires pour 1 vantail



3-2-Montage des accessoires pour vantail semi-fixe.



3-3-Montage des accessoires pour vantail service.



4-Montage de la gâche sur le bâti.

